

# INSTRUCTIONS AND REPAIR PARTS LIST

## 404B 4 HOLE NEST

### READ ALL DIRECTIONS CAREFULLY BEFORE BEGINNING INSTALLATION

**TOOLS REQUIRED:** Straight Edge Screwdriver, Adjustable Wrench

REPAIR PARTS LIST - See Exhibit A on reverse side for location of parts.

<b>Ref. No.</b>	<b>Part No.</b>	<b>Description</b>	<b>Quantity</b>
1	410711	Right Partition	1
2	410713	Left Partition	2
3	404725	Front Top Panel	1
4	404726	Front Bottom Panel	1
5	404727	Back Top Panel	1
6	404728	Back Bottom Panel	1
7	404729	Roof Panel	1
8	410730	Nest Bottom	4
9	404731	Perch Board (Manufactured Wood)	3
10A	410734	Short Perch Assembly, Left	1
10B	404734R	Short Perch Assembly, Right	1
11A	410735	Long Perch Assembly, Left	1
11B	404735R	Long Perch Assembly, Right	1
12	410719*	Hanger Bracket	2
13	OF128*	1/4-20 x 1 Unslotted Hx Hd Cap Screw	12
14	OF55*	1/2-20 Hex Nut	12
15	OF214*	10-24 x 1/2 Slotted Round Head Machine Screw	42
16	OF53*	10-24 Machine Screw Nut	42
	404732*	Hardware Bag, includes items marked with *	1
	OM109	Decal, Brower	1
	ISB404B	Instruction Sheet	1

#### **MODEL NUMBER**

The MODEL NUMBER is: 404B 4 Hole Nest

#### **WHEN ORDERING PARTS**

- (1) Show MODEL NUMBER and NAME: Example - 404B Nest  
(2) Show PART NUMBER and FULL DESCRIPTION of part: Example - 410734 Short Perch Assembly, Left

#### **HOW TO ORDER PARTS**

Repair parts may be ordered from your dealer.



**INSTALLATION INSTRUCTIONS FOR 404B 4 HOLE NEST**  
**DO NOT TIGHTEN ANY FASTENERS UNTIL INSTRUCTED TO DO SO!**

**STEP 1:** Lay roof panel (Ref. No. 7) upside down. Attach the three partitions using 10-24 x 1/2 machine screws and 10-24 nuts(Ref. Nos. 15 and 16). Note there are 2 left panels(left as you face the front of the nest) and 1 right panel. Tighten fasteners. Turn nest over.

**STEP 2:** Attach front and back panels using 10-24 x 1/2 machine screws and 10-24 nuts(Ref. Nos.15 and 16). Hand tighten only. The panels are:

Front Top(Ref. No. 3)—has two lips and one notch.  
 Front Bottom(Ref. No. 4)—has two lips but does not have a notch.  
 Back Top(Ref. No. 5)—has one lip and one notch.  
 Back Bottom(Ref. No. 6)—has one lip but does not have a notch.

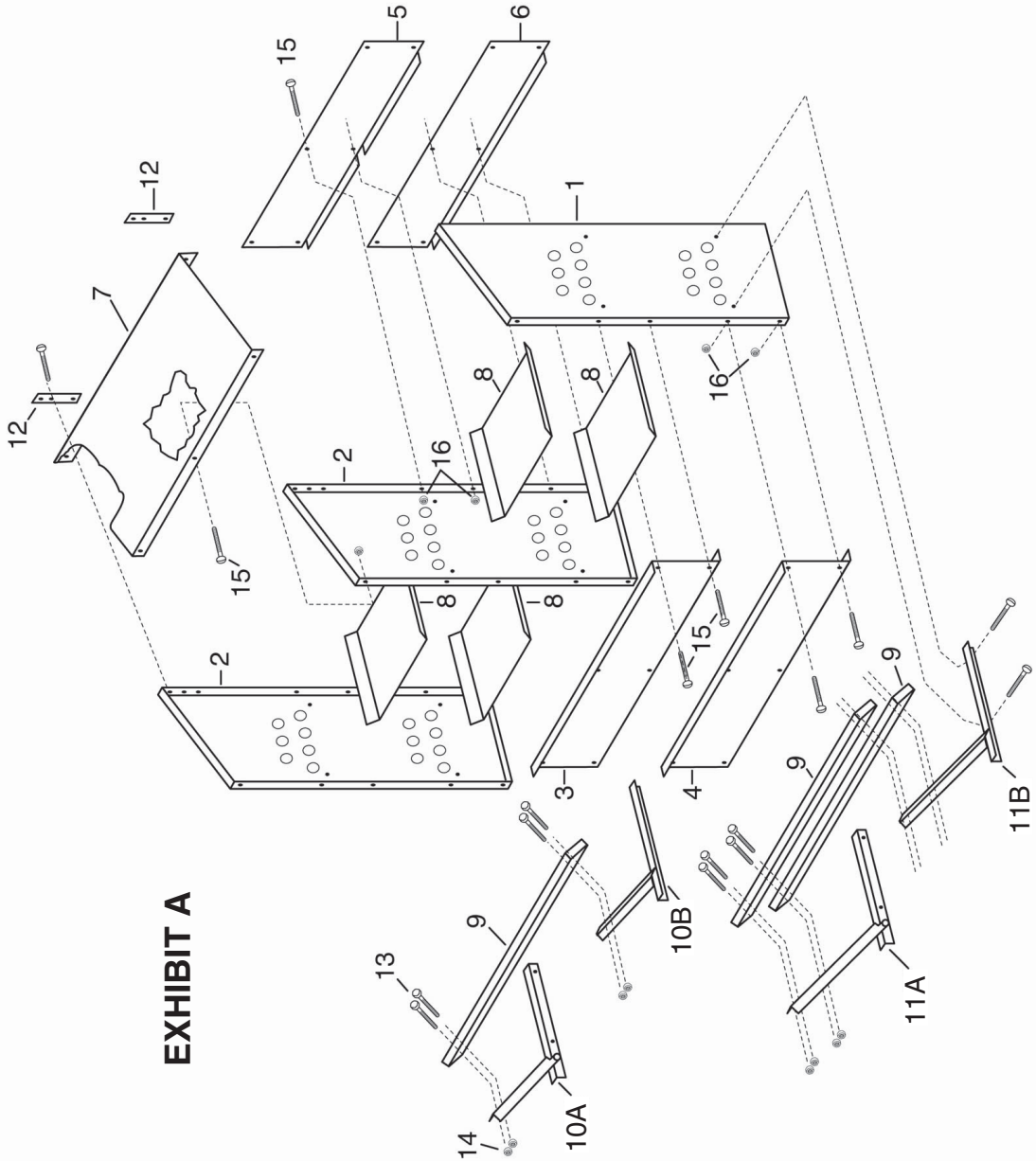
**STEP 3:** Attach long and short perch assemblies using 10-24 x 1/2 machine screws and 10-24 nuts(Ref. Nos. 15 and 16). All perch assemblies go on the outside of the 2 outside partitions. Both long and short perch assemblies have a left and a right. See Exhibit A. Hand tighten only.

**STEP 4:** Attach the 3 Ref. No. 9 perches using 1/4-20 x 1 screws and 1/4-20 hex nuts(Ref Nos. 13 and 14). Tighten.

**STEP 5:** Attach hanger brackets(Ref. No. 12) to the back of both upper corners using 10-24 x 1/2 machine screws and 10-24 nuts(Ref. Nos.15 and 16). Now tighten all fasteners.

**STEP 6:** Insert Ref.No.8 Nest Bottom in each opening. Your Brower nest is ready for use.

Note: Ref. No. 12 Hanger Brackets are provided for wall mounting



**EXHIBIT A**